



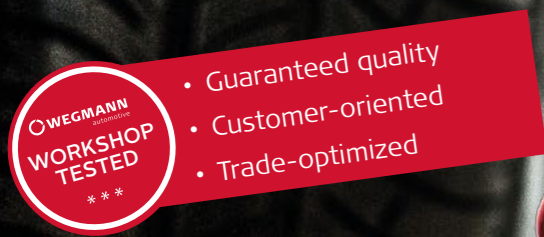
PRODUCT CATALOG

WHEEL BALANCING WEIGHTS

VALVES

TOOLS

CHEMICALS



CONTENTS

ALL ABOUT WHEELS

ABOUT US 04
 WHAT IS AN IMBALANCE? 06
 THE SIX OPTIONS FOR BALANCING 07
 KEY INFORMATION ABOUT WEIGHTS 09

WHEEL BALANCING WEIGHTS

ZINC WHEEL BALANCING WEIGHTS 10
 STEEL WHEEL BALANCING WEIGHTS 11
 ROLLHOLDERS AND ACCESSORIES 12
 INSTALLATION INSTRUCTIONS KNOCK-ON AND ADHESIVE WEIGHTS 14

VALVES

KEY INFORMATION ABOUT VALVES 17
 SNAP-IN VALVES 18
 METAL VALVES 19
 VALVE ACCESSORIES 19

TOOLS AND ACCESSORIES

TOOLS AND ACCESSORIES 21

KEY TO SYMBOLS

Zinc	Light alloy rim	Car	Coated
Lead	Steel rim	Van	Fingerlift
Steel			

ABOUT US

DEAR CUSTOMER,

Welcome to our new WEGMANN automotive® catalog. Explore our wide selection of high-quality tire service products that were specially developed for your needs. Discover our first-class products and find exactly what you need to guarantee smooth service.

Have fun browsing!

OUR COMMITMENT IS NOT JUST ABOUT QUALITY: YOUR SATISFACTION IS VERY IMPORTANT TO US.

We love service.

Our focus is on always addressing the requirements of our customers. We offer products and services that make our customers' everyday work routines easier.

We work together as partners.

We interact with our customers as equals. We work out solutions for our mutual success.

We are proud to offer you not only high-quality tyre service products, but also a customer experience tailored to your individual needs.

Contact us today:

WEGMANN automotive GmbH

Rudolf-Diesel-Straße 6

D-97209 Veitshöchheim

Phone: +49 931 - 32104-230

Email: cseu@wegmann-automotive.com



WORLD MARKET LEADER

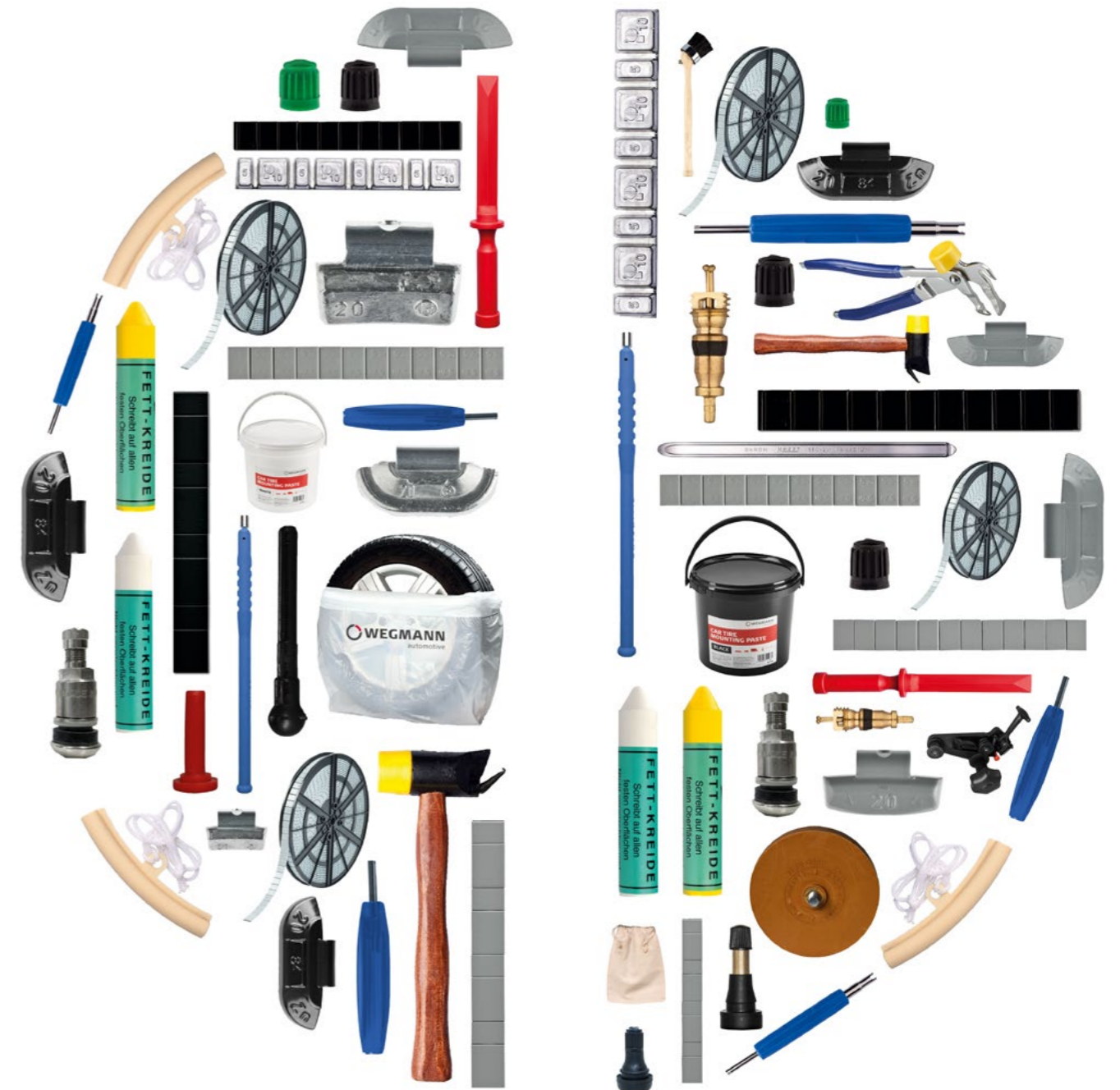
WEGMANN automotive® is the world market leader for wheel balancing weights and battery bushings. We supply all renowned automobile manufacturers and the leading spare parts dealer organisations worldwide. WEGMANN automotive® products are installed in two out of every three new vehicles. As a supplier to the Formula One, we also benefit from using the products under extreme conditions and can therefore guarantee maximum precision and safety.

At WEGMANN automotive®, we are proud to be a significant competitor in the automotive after-market with our strong innovative spirit and constant motivation. At the same time, we never lose sight of our values and traditions.

WE ARE NUMBER 1 FOR TIRE SERVICE PRODUCTS

We offer reliable and innovative solutions that were developed based on the highest quality standards in the industry and are supported by first-class service.

EVERYTHING ABOUT THE WHEEL

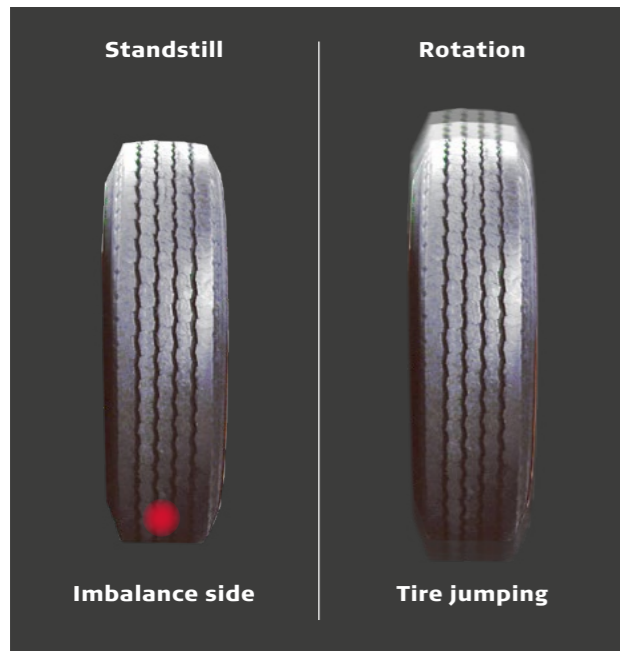


WHAT IS AN IMBALANCE?

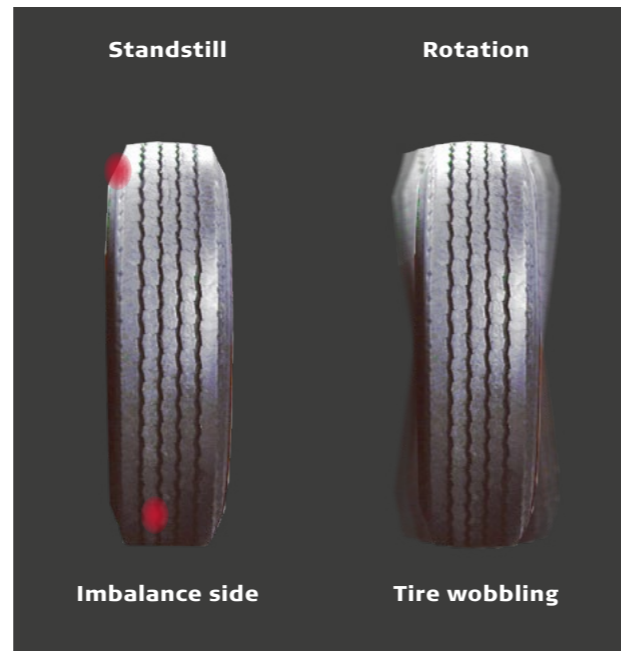
Video Tutorial: Imbalance

How to detect an imbalance in your tires and why these signs require urgent attention.

CLICK ME



STATIC IMBALANCE



DYNAMIC IMBALANCE

COMFORTABLE DRIVING? THAT'S ONLY POSSIBLE WITH BALANCED WHEELS!

Balancing wheels:

- Improves driving comfort
- Saves money due to reduced wear
- Improves the vehicle's driving and braking characteristics
- Is viewed as an essential component of professional wheel and tire changes by all automobile manufacturers

HOW ARE IMBALANCES CORRECTED?

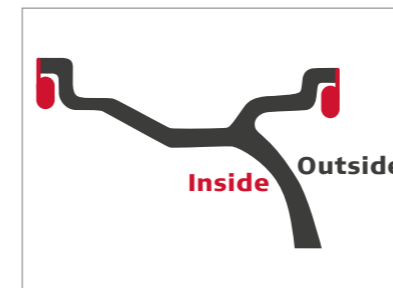
To correct an imbalance, measurements are taken to determine on which side the uneven masses are located. According to the measurement results, attaching counterweights can balance both static and dynamic imbalances and the wheel rolls smoothly and reliably even at high speeds.

THE SIX OPTIONS FOR BALANCING

Video Tutorial: Imbalance

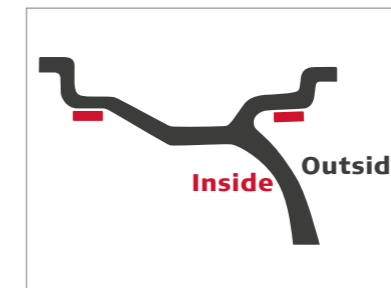
The different types of imbalances and why it is important to prevent them.

CLICK ME



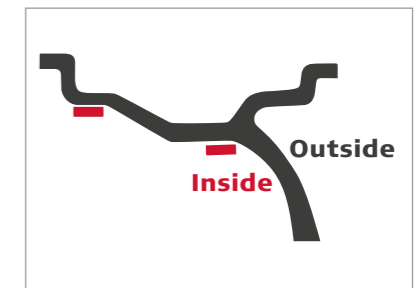
BALANCING OPTION 1

Balancing using knock-on wheel weights for both levels. This method requires the least mass for balancing. This option is used by most automobile manufacturers.



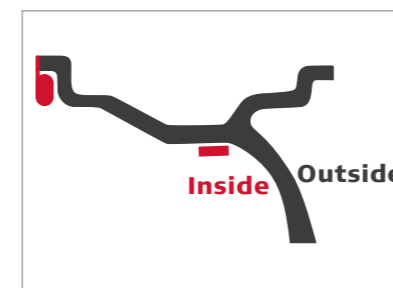
BALANCING OPTION 2

Balancing using adhesive weights for both levels. The weights are attached adhesively on the inside and outside in the outermost possible positions.



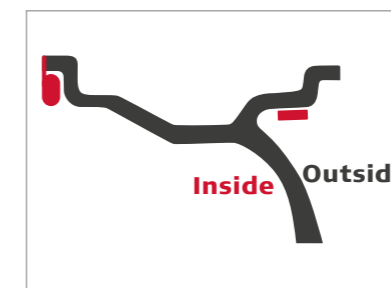
BALANCING OPTION 3

Both adhesive weights are attached adhesively to the inside of the rim. The outer balance level is shifted towards the inside here behind the spokes.



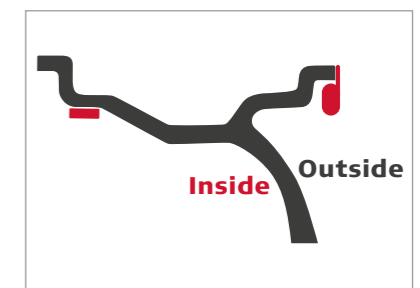
BALANCING OPTION 4

The outer balance level is shifted towards the inside behind the spokes, and the adhesive weight is attached adhesively in the rim centre in the area of the brake discs. On the inner rim flange, a knock-on wheel weight is attached.



BALANCING OPTION 5

On the outside of the rim, an adhesive weight is used. Adhesion is carried out in the outermost possible position. On the inner rim flange, a knock-on wheel weight is used.



BALANCING OPTION 6

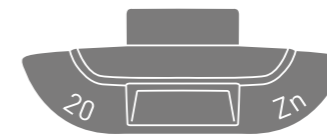
On the outside of the rim, a knock-on wheel weight is used at the rim flange. On the inside of the rim, an adhesive weight is used. The weight is attached adhesively in the outermost position in the rim centre.



KEY INFORMATION ABOUT WEIGHTS

PRODUCT ADVANTAGES OF KNOCK-ON WHEEL WEIGHTS

WEGMANN automotive® knock-on wheel weights are 100% protected by a sealed layer of powder varnish thanks to the special coating method. This reliably protects the weight and rim against galvanic corrosion. The tried-and-tested design guarantees reliable function. The flat profile in particular ensures good adjustment to the rims and enables hubcaps to be mounted smoothly.



1 Material:

- High-quality zinc

2 Coating*:

- Quality powder coating protects the entire weight from corrosion
- Salt spray test > 250 h
- Impact-resistant powder varnish in silver or black
- Metallic effect to match the rim color

3 Clip:

- High spring tension force for a secure fit
- The weight doesn't shift even under extreme conditions
- Optimal positioning on the rim

4 Design:

- Universal fit for nearly all common rim types
- Developed for commerce
- Made in Germany

PRODUCT ADVANTAGES OF ADHESIVE WEIGHTS

The universal adhesive bars and rolls are ideal for discreet balancing of alloy wheel rims. The high-quality adhesive tape and ease of shaping facilitate application in the workshop and deliver optimal work results. With a variety of profiles, colors and rolls, WEGMANN automotive® offers the right solution for every preference.



1 Material:

- High-quality zinc or high-quality steel

2 Coating*:

- Quality powder coating protects the entire weight from corrosion
- Salt spray test > 250 h
- Impact-resistant powder varnish in silver or black
- Metallic effect to match the rim color

3 Adhesive tape:

- Quality double-sided adhesive tape with protective foil and fingerlift
- Ideal adhesive properties with guaranteed adhesion force of 35N/cm²

4 Design:

- Application-oriented
- Clean processing
- Smooth surface

*not valid for "U" versions (uncoated or galvanised)

ZINC WHEEL BALANCING WEIGHTS



TYPE 80

Knock-on wheel weight for steel rims: Zinc weight available with powder coating in silver (Type 80) or without coating. The special shape of the weight allows a universal application on almost all steel rims.

Also for French vehicles and lightweight lorries.

Variants:

- Type 80 (Silver) 1180-0XX0-151
- Type 80 (Uncoated) 1180-0XX0-051

Weight sizes: 5 g, 10 g, 15 g, 20 g, 25 g, 30 g, 35 g, 40 g, 45 g, 50 g

PU: 5-30 g: 100 pc. | 35-50 g: 50 pc.

TYPE 62



Knock-on wheel weight for alloy rims: Zinc weight with powder coating in silver. The special shape of the weight allows a universal application on almost all light alloy rims.

Weight sizes: 5 g, 10 g, 15 g, 20 g, 25 g, 30 g, 35 g, 40 g, 45 g, 50 g

PU: 5-30 g: 100 pc. | 35-50 g: 50 pc.

Part number: 1662-0XX0-151

STEEL WHEEL BALANCING WEIGHTS



TYPE 37

Adhesive bar for alloy rims: Steel adhesive weight bar with 5 g segments. Equipped with protruding liner for easy handling.

Variants:

- Galvanized 1337-0601-551
- Silver 1337-0601-251
- Silver Premium adhesive tape 1337-0604-251
- Black 1337-0601-751
- Black Premium adhesive tape 1337-0604-751

Dimensions: Width: 19mm, Height: 3.8 mm (incl. adhesive tape)

Segmenting: 12 x 5 g (60 g)

PU: 100 pc.

TYPE 37R

Adhesive roll for alloy rims: Steel endless adhesive weight with 1,000 segments of 5 g each on a roll. Easy to separate. Equipped with protruding liner for easy handling.

Variants:

- Galvanized 1337-0051-559
- Silver 1337-0051-259
- Silver Premium adhesive tape 1337-0054-259
- Black 1337-0051-759
- Black Premium adhesive tape 1337-0054-759

Dimensions: Width: 19mm, Height: 3.8mm (incl. adhesive tape)

Segmenting: 1,000 x 5 g (5 kg)

PU: 1 roll

Accessories: MASTER-Cut unrolling and cutting device (optionally with stable stand) or rollholder Type 2800.



TYPE 38

Adhesive bar for alloy rims: Steel adhesive weight bar with 5 g segments. Equipped with protruding liner for easy handling.

Variants:

- Galvanized 1338-0601-551
- Silver 1338-0601-251
- Silver Premium adhesive tape 1338-0604-251
- Black 1338-0601-751
- Black Premium adhesive tape 1338-0604-751

Dimensions: Width: 19 mm, Height: 3.8 mm (incl. adhesive tape)

Segmenting: 4 x 5g + 4 x 10g (60 g)

PU: 100 pc.

ROLLHOLDERS AND ACCESSORIES



MASTER-CUT

Rollholder with integrated cutting device. Suitable for all adhesive rolls from WEGMANN automotive®. Multi-function for mounting on the workbench or on the wall. Integrated scale and cutting device for fast and easy work. The stand for extra-flexible positioning and roll are available separately.

PU: 5-30 g: 100 pc. | 35-50 g: 50 pc.

Part number: 0401-0023-120



TYPE 2800

This rollholder is suitable for all 5 kg adhesive rolls. Multi-function for mounting on the workbench or on the wall. The roll is available separately.

PU: 1 pc.

Part number: 2800-4801-002



REPLACEMENT BLADES

Content: 2 x Replacement knife

Part number: 0401-0023-066



REPLACEMENT LEVER

Content: 1 x Replacement lever

Part number: 0401-0023-112

ROLLHOLDERS AND ACCESSORIES



MASTER COMPLETE SET

Content: 1 x Pin for blade
2 x Cutting base red
2 x Replacement blade

Part number: 0401-0023-111



STAND

Stable stand for Master Cut 0401-0023-120.

Content: 1 x Stand incl. screws
1 x Base

Part number: 0401-0023-121



DRIVE UNIT

This rollholder is suitable for all 5 kg adhesive rolls. Multi-function for mounting on the workbench or on the wall. The roll is available separately.

Content: 1 x Drive and cutting unit incl. locking bracket and lever as well as axle unit

Part number: 0401-0023-110

INSTALLATION INSTRUCTIONS KNOCK-ON AND ADHESIVE WEIGHTS

KNOCK-ON WHEEL WEIGHTS



1. SELECTING A SUITABLE WEIGHT

Before installation, the appropriate weight is selected based on the rim shape. A differentiation is made depending on the rim design. Before installation, place the weight on the rim to check the fit.



2. PLACING THE WEIGHT ON THE RIM

Place the weight at the correct point for the imbalance. Before hitting the weight, make sure that the clip is touching the rim flange. The actual body of the weight should not touch the rim.



3. HITTING THE WEIGHT

Once the weight is correctly aligned, it is struck with a suitable installation tool. For mounting, a maximum of two strong blows should be applied. Note: Increasing the stroke rate can damage the coating of the weights.



4. CHECKING THE CORRECT POSITION

After installation, it is recommended to check again whether the weight is positioned correctly.

ADHESIVE WEIGHTS



1. PREPARATION

Make sure that the temperature of weights, rim and environment is at least 16 °C. Clean the rims with a suitable cleaning agent to prevent grease and silicone residues on the rim (e.g. Isopropanol 70%).



2. ADJUSTING THE WEIGHT TO THE RIM SHAPE

Adjust the adhesive weight to the rim radius with the protective foil. The radius of the weight body and rim must be at least parallel to one another. It is even better if the radius of the weight body is smaller than the rim radius.



3. REMOVING THE PROTECTIVE FOIL

After you have adjusted the weight to the rim radius, remove the protective foil from the adhesive tape. When doing so, make sure not to touch the adhesive surface before it is attached!



4. ATTACHING THE WEIGHT

Now press the weight against the rim, from the centre outwards towards the outer edge. The pressure should be at least 100 kPa.

PACKAGING



EVERYTHING AT A GLANCE: NEW DESIGN FOR MORE CLARITY

The packaging design used by WEGMANN automotive® specifically addresses the needs of trade and workshops. The focus is on quickly identifying the most information: customer-oriented and optimised for trade. This is why special attention is paid to type description and weight information on the label. The visual representation of the weight and brief description text and part number clearly identify every type and leave no doubts. The packaging volume is also immediately legible. Additional symbols for material, rim type, vehicle type and coating/color round off this complete information.

WEGMANN
automotive

WEIGHTS

TYPE	37	100 pcs	
		12 x 5 / 10g	
GB	adhesive weight		
D	Klebegewicht		
F	masse adhésive		
E	contrapesas adhesivas		
PN	1337-0604-751 1	100 pcs	
Fe	Made of Steel	12x5 / 10g	
	Alloy Wheels		
	Passenger Cars		
	Coated		
			2310NTC7*0UV
www.wegmann-automotive.com			

WEGMANN
automotive

WEIGHTS

TYPE	37	100 pcs	
		12 x 5 / 10g	
PN	1337-0604-751 1		4 049256 091482
www.wegmann-automotive.com			



KEY INFORMATION ABOUT VALVES

Video Tutorial: Tire valves
All the important information about car tire valves.
[CLICK ME](#)

PRODUCT ADVANTAGES OF VALVES


WEGMANN automotive® valves are optimised for trade and manufactured using high-quality materials. The materials are highly resistant, guaranteeing protection against critical environmental influences and mechanical stress. All products undergo a strict 100% quality test of their core functions.



All common valves for cars available in the product range
Suitable for ETRTO rims
Workshop tested

INSTALLATION INSTRUCTIONS SNAP-IN VALVES

1. SELECTING A SUITABLE VALVE



∅	TR
11,3 mm	412
	413
	414 (L)
	418
	600HP
15,7 mm	415

The valve must be suitable for the rim hole diameter.



It must not protrude over the rim edge.

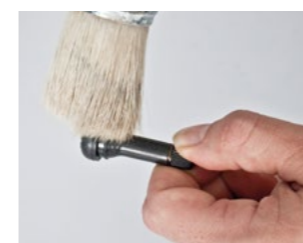
2. CHECKING THE RIM HOLE



NOTE: For wheels with speeds above 210 km/h, check whether rim is permitted for snap-in valves. If not, use metal valves.

The rim hole must be free of burrs, damages and dirt. It must comply with the regulations of ETRTO

3. INSTALLING THE VALVE



Coat the valve with soapy water or a fitting lubricant to prevent damages to the valve surface during installation.



Carefully pull in the valve with a standard mounting lever in the axial direction to the valve hole – do not tilt or overstretch the valve.

4. VISUAL CHECK




Make sure the valve fits properly in the rim.



Inspect the valve surface for damages and tears.

SNAP-IN VALVES

VALVE STEMS FOR TUBELESS CAR TYRES




Part no.	TR	Variant	ETRTO	A in mm	ø Valve hole in mm	PU	Vehicle type
0403-0000-067	TR412	Mounted	V2.03.6	33	11.3	100	
0403-0000-068	TR412	Partially mounted	V2.03.6	33	11.3	100	
0403-0000-069	TR412	Unmounted	V2.03.6	33	11.3	100	
0403-0000-006	TR413	Mounted	V2.03.1	42.5	11.3	100	
0403-0000-070	TR413	Partially mounted	V2.03.1	42.5	11.3	100	
0403-0000-071	TR413	Unmounted	V2.03.1	42.5	11.3	100	
0403-0000-007	TR414	Mounted	V2.03.2	48.5	11.3	100	
0403-0000-072	TR414	Partially mounted	V2.03.2	48.5	11.3	100	
0403-0000-073	TR414	Unmounted	V2.03.2	48.5	11.3	100	
0403-0000-074	TR414L	Mounted	V2.03.8	56.5	11.3	100	
0403-0000-075	TR418	Mounted	V2.03.4	61.5	11.3	100	
0403-0000-076	TR418	Partially mounted	V2.03.4	61.5	11.3	100	
0403-0000-077	TR418	Unmounted	V2.03.4	61.5	11.3	100	

Maximum operating pressure at room temperature: 4.5 bar

Use clamp-in valves at speeds above 210 km/h.

VALVE STEMS FOR TUBELESS VAN TYRES



Part no.	TR	Variant	ETRTO	A in mm	ø Valve hole in mm	PU	Vehicle type
0403-0000-078	TR600 HP	Mounted	V3.23.1	44	11.3	100	

Maximum operating pressure at room temperature: 5.5 bar

Use clamp-in valves at speeds above 210 km/h.

METAL VALVES

VALVE STEMS FOR TUBELESS CAR AND VAN TIRES

CHROME-PLATED BRASS VALVE

Part no.	Designation	Variant	A in mm	ø Valve hole in mm	PU	Vehicle type
0403-0000-079	42MS11,3	Mounted	42	11.3	100	

Installation torque: 3-5 Nm

Maximum operating pressure at room temperature: 14 bar

ALUMINIUM VALVE

Part no.	Designation	Variant	A in mm	ø Valve hole in mm	PU	Vehicle type
0403-0000-080	42MS11,3 black	Mounted	42	11.3	20	

Installation torque: 3-5 Nm

VALVE ACCESSORIES

VALVE CAPS

Part no.	Designation	PU	Vehicle type
0403-0000-082	Plastic valve cap with seal, black	100	

VALVE CORE

Part no.	Designation	PU	Vehicle type
0403-0000-081	Brass valve core TRC1, short	100	



TOOLS AND ACCESSORIES

TIRE FITTING LUBRICANT



For fast, gentle and easy installation. Makes it easier to pull tires on to the rim. Temperature range -15 °C to +50 °C.

Variants:

- White 0403-0000-003
- Black 0403-0000-004

PU: 1 pc. (5 kg)

MARKING CHALK



Grease marking chalk – for marking tyres. Writes on all firm surfaces, resistant to wiping and breaking. Ø 17,5 mm.

Variants:

- White 0401-0025-039
- Yellow 0401-0025-040

PU: 1 box of 12 pieces

CHALK HOLDER



For marking chalk Ø 17,5 mm.

PU: 1 pc.

Part number: 0401-0025-044

UNIVERSAL WEIGHT PLIERS



For attaching, removing and separating wheel balancing weights. With plastic cap to protect the weight coating.

PU: 1 pc.

Part number: 0401-0001-000

SCRAPER



For easy and gentle removal of adhesive weights. High-quality, strong plastic. Blade width 22,5 mm.

PU: 1 pc.

Part number: 0401-0025-038

SPECIAL BRUSH FOR MOUNTING PASTE



Angled special brush for the application of tyre fitting lubricant. Brush head Ø 51,5 mm, handle length 300 mm

PU: 1 pc.

Part number: 0401-0025-002

TOOLS AND ACCESSORIES



HAMMER FOR KNOCK-ON WHEEL WEIGHTS

For attaching knock-on wheel weights to the rim. With pin for removing knock-on wheel weights and plastic cap to protect the weight coating.

PU: 1 pc.

Part number: 0401-0025-013



RUBBER ERASER PLATE

For removing foam and adhesive residues on the rim.

Ø 90 mm incl. adapter.

PU: 1 pc.

Part number: 0401-0028-361



VALVE SCREW DRIVER, SINGLE

For screwing standard valve inserts into rims and unscrewing them (car and lorry).

Plastic, nickel-plated metal.

PU: 1 pc.

Part number: 0401-0023-060



VALVE SCREW DRIVER, DOUBLE

For screwing standard and EM valve inserts into rims and unscrewing them (car, lorry, EM). Plastic, nickel-plated metal.

PU: 1 pc.

Part number: 0401-0025-014



VALVE MOUNTING LEVER

For installing snap-in valves.

Made of high-strength plastic.

PU: 1 pc.

Part number: 0401-0023-059





PERFECT SERVICE FROM WEGMANN AUTOMOTIVE®

ORDER FROM WEGMANN AUTOMOTIVE®

To easily order products from WEGMANN automotive®, note down the individual part numbers from our current product catalogue.

For knock-on wheel weights, select the desired grammage and insert this instead of the XX for the sixth and seventh digits.

SERVICE FROM WEGMANN AUTOMOTIVE®

With our friendly customer advisors, WEGMANN automotive® stands for top customer satisfaction. For questions and orders, we would be happy to assist you. You can reach us at the following address:

WEGMANN automotive GmbH
Rudolf-Diesel-Straße 6 | D-97209 Veitshöchheim
Phone: +49 931 - 32104-230
Email: cseu@wegmann-automotive.com

QUALITY FROM WEGMANN AUTOMOTIVE®

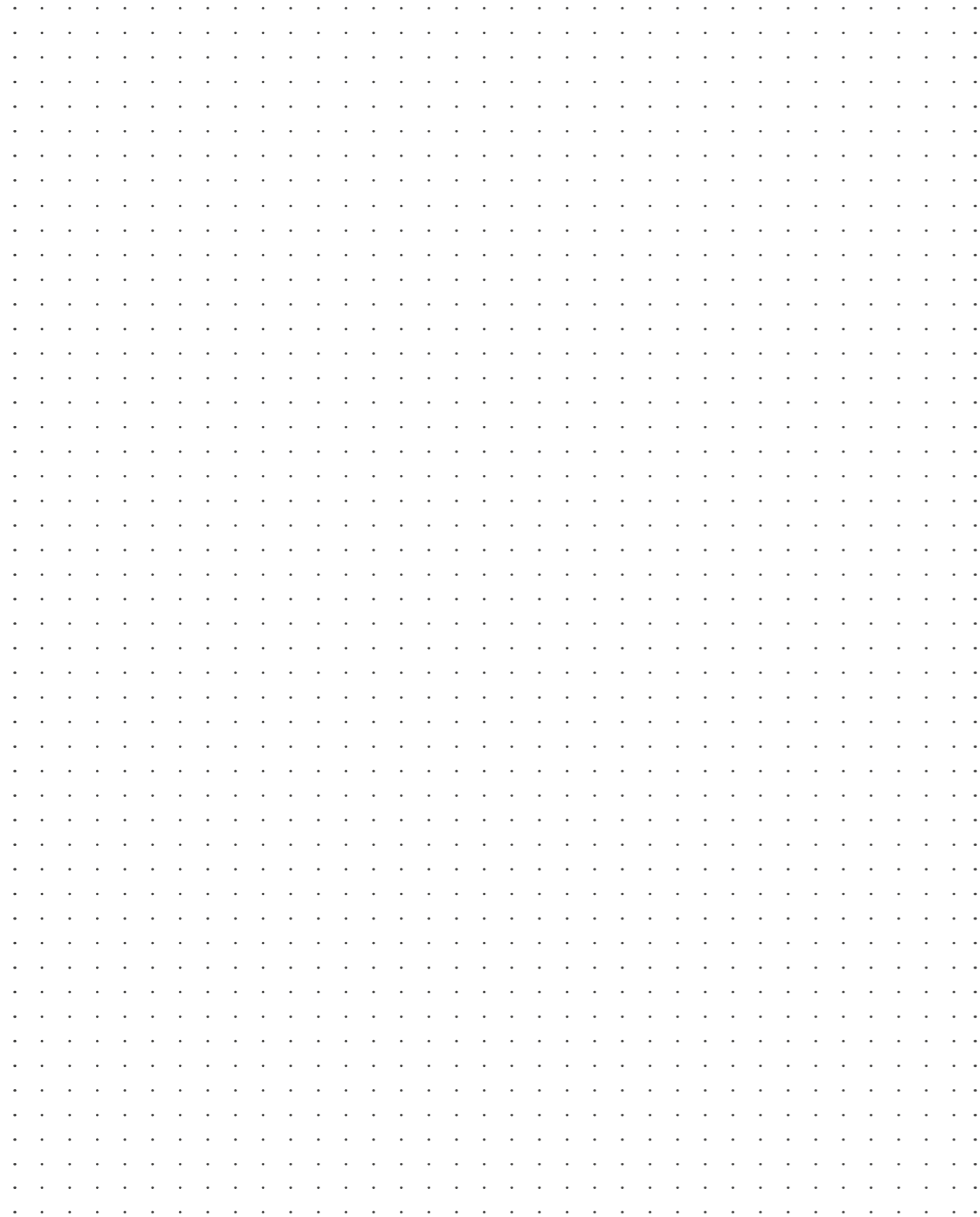
After successfully receiving certification in accordance with DIN EN ISO 9001 back in 1995, we extended our efforts in 1998 to further certification in accordance with QS-9000 and VDA 6.1 – and were successful again.

In April 1998, we became the first manufacturer of wheel balancing weights in Europe to be certified in accordance with DIN EN ISO 9001, QS-9000 and VDA 6.1.

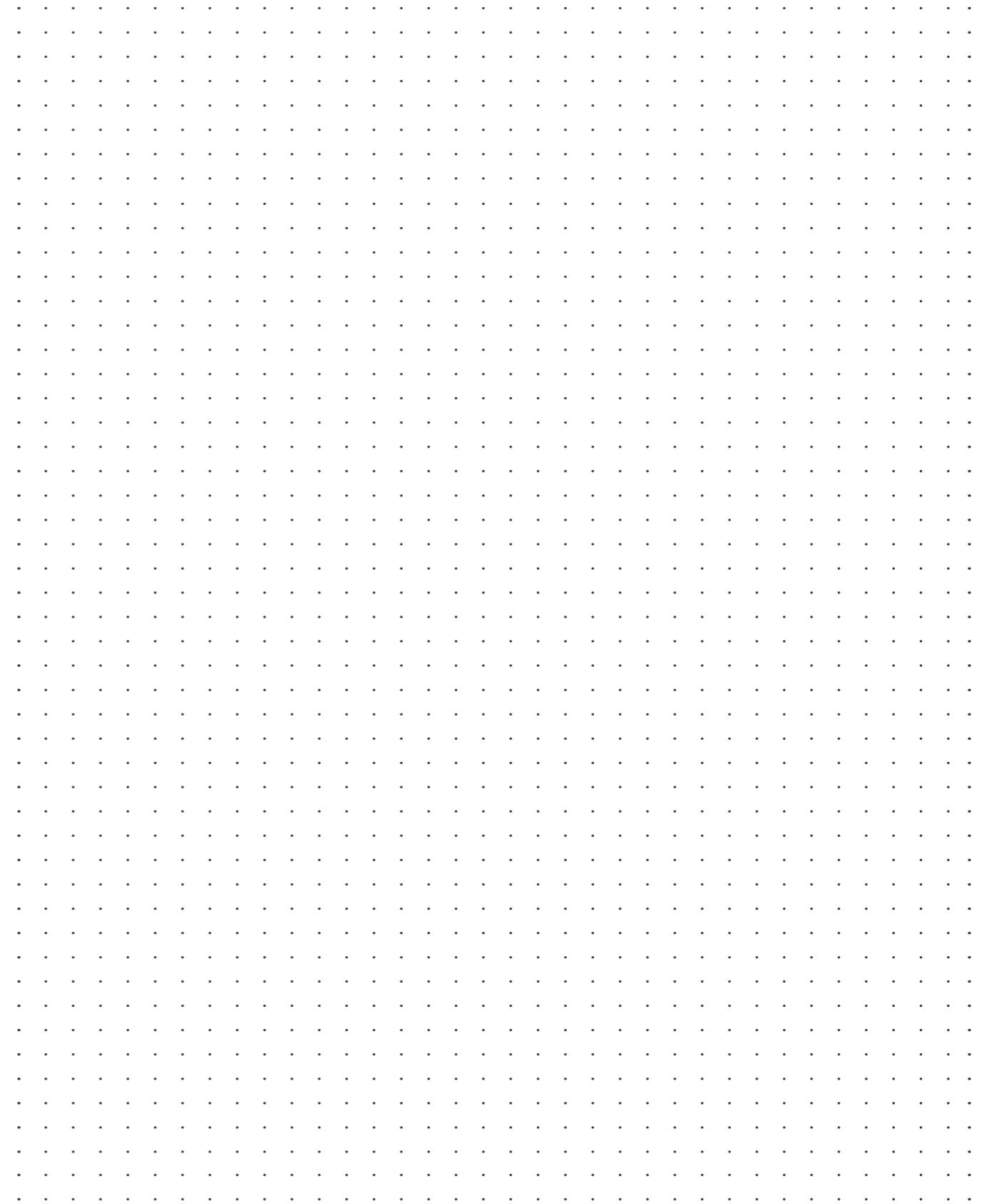
In 2004, we received certification for ISO/TS 16949: 2002 and ISO 14001. Since May 2010, we are certified in accordance with ISO/TS 16949:2009 with product development, as well as for ISO 9001:2008 with product development and UM 14001:2009 with product development. In March 2015, we also became certified in accordance with ISO 50001 (energy management). Then in 2018, this was followed by certification in accordance with ISO 9001:2015 and IATF 16949 as well as ISO 14001:2015.



NOTES



NOTES





WEGMANN
automotive

WEGMANN automotive GmbH
Rudolf-Diesel-Straße 6 | D-97209 Veitshöchheim
Phone: +49 931 - 32104-0 | Email: info@wegmann-automotive.com

www.wegmann-automotive.com